



International Quality Iron Castings

J O B B I N G F O U N D R Y

GREY, ALLOY IRON CASTINGS

S.G. (Ductile) IRON CASTINGS



Engineering for Excellence



IRON CASTINGS



Isgec Corporate Office at Noida, a suburb of New Delhi, India

A Few Prestigious Customers

Dresser-Rand

Xylem Water Solutions Ltd.

Siemens

KHD Humboldt Wedag

GHCL Ltd.

Nirma Ltd.

Jyoti Ltd.

Wilo Pumps

Atul Ltd.

BHEL

Maruti Suzuki

Nagata India

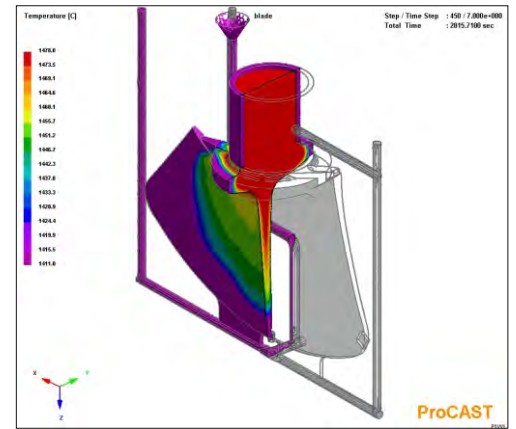
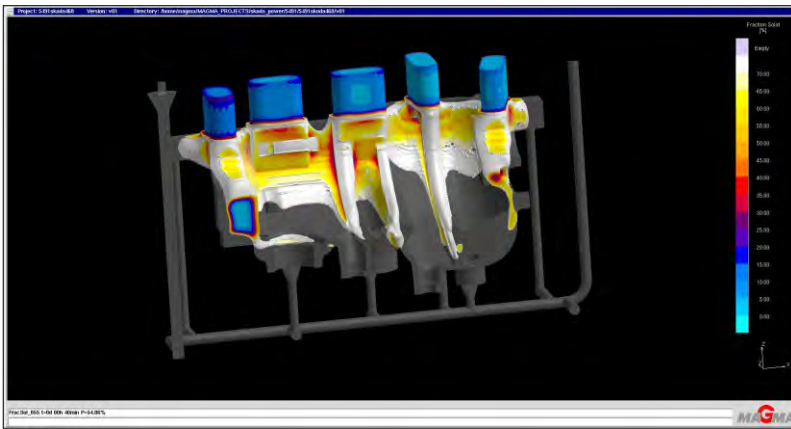
Tata Motors

JBM Group

- Isgec Iron Foundry is a unit of Isgec Heavy Engineering Ltd., a public company with a diversified product portfolio and customers spread across 76 Countries.
- Castings conforming to International standards including DIN, BS, JIS, ASME
- Single piece casting weighing upto 20 MT
- Modern Pattern Shop
- Facility for Full Mould Process Castings (Lost Foam)
- Facility to offer fully machined Castings
- Hydro Pressure tested Castings upto 10 Kg /sq. cm.
- Can offer equipment under third party inspection by International agencies including Lloyds, Jacobs Engineering, TUV, SGS

Technology

- Flow & Thermal Analysis / Simulation using MAGMASOFT & PROCAST



Quality

- 21 Channel Spectrometer
- Image Analyser
- Ultrasonic Testing
- Magnetic Particle Test
- Dye Penetration Test
- Radiography up to 200mm thickness (Iridium & Cobalt source)
- Qualified NDT Personnel (Level II & III)



Spectrometer & Image Analyser

Ultrasonic & UT Testing

Soda Ash Industry

Bottom Intermediate Casting



Casting for Ring



Cooling Shell Casting



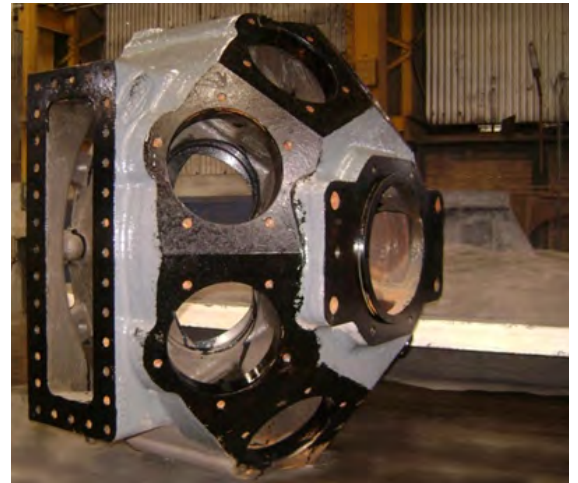
Bottom Ring Casting

Ammonia Column Casting

Pump & Compressor Industry



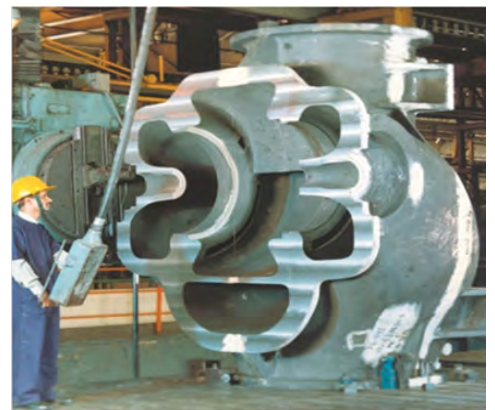
Suction Bell Casting



Compressor Cylinder Casting



Compressor Frame Casting



Horizontal Split Pump Casing Casting

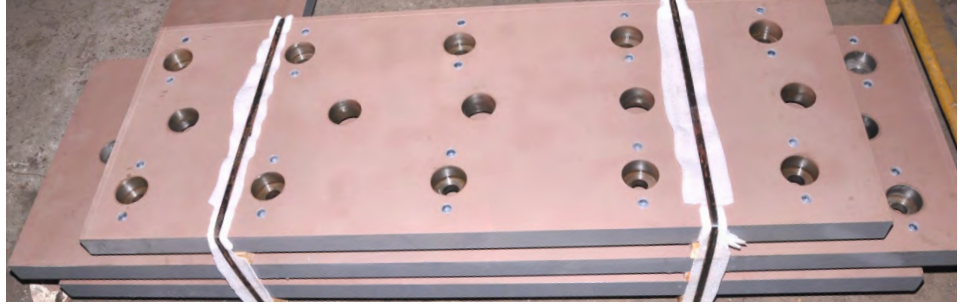


Cement, Power and Paper Industry

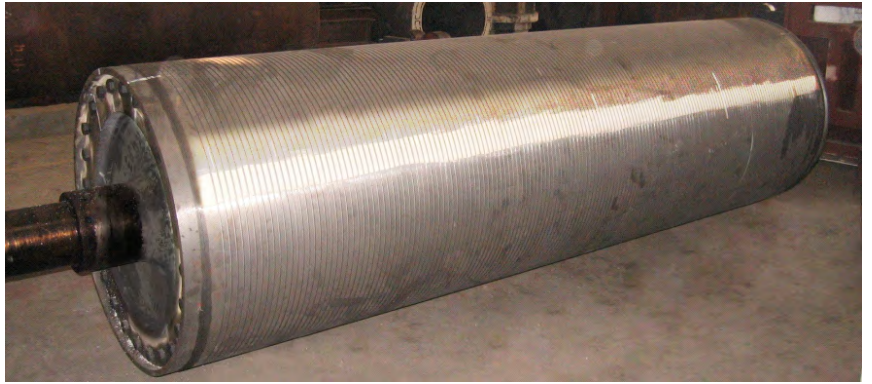
Support Roller Bearing Base Casting for Cement Plant



Sole Plate for Paper Machine

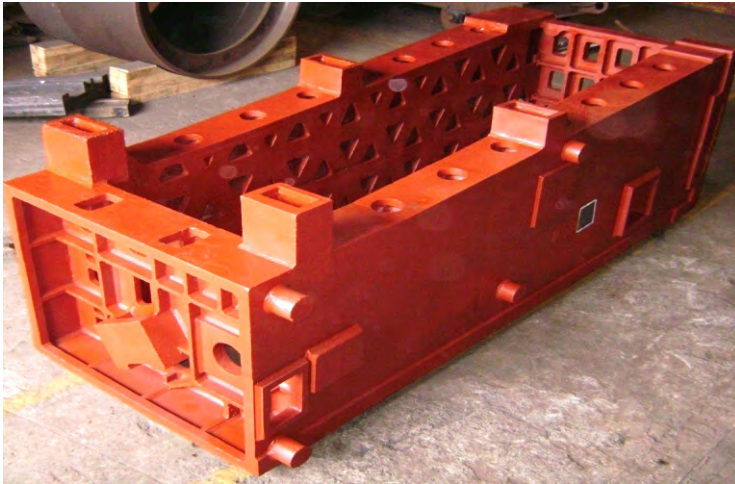


Bearing Housing Casting for Turbine



Press Roll Assembly for Paper Machine

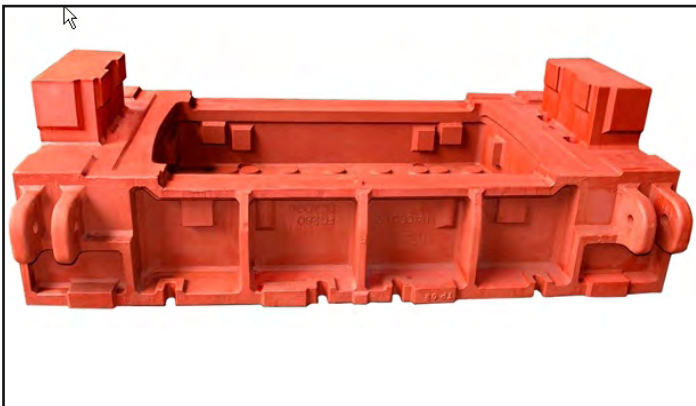
Full Mould Castings (Machine Tool, Tool & Die Industry)



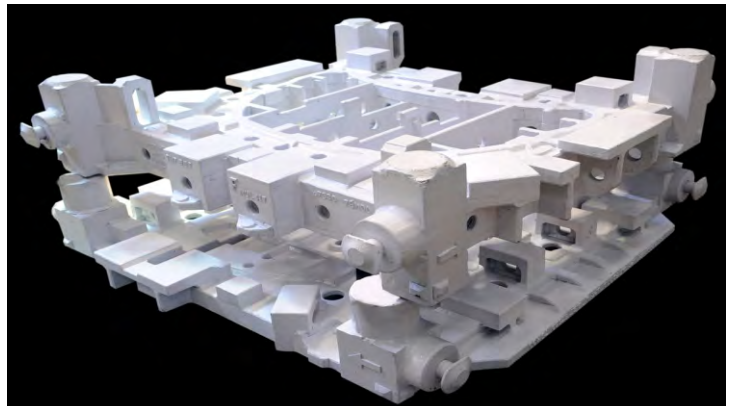
Bed Casting for Machine tool



Casting for Tool & Die



Casting for Tool & Die



Casting for Tool & Die

Manufacturing Capabilities (500 MT / Month)

Weight Range	:	300 Kgs to 20 MT single piece
Maximum Size	:	6M x 6M x 2M
Area Under Crane	:	5500 Sq.M
EOT Cranes	:	7 Nos.
Max. Lifting Capacity	:	30 MT

Melting

Induction Furnace	:	3 MT
Induction Furnace	:	8 MT (Dual Track)

Moulding

Continuous Sand Mixer	:	30 MT / Hr. - 1 No.
Continuous Sand Mixer	:	20 MT / Hr. - 1 No.
Continuous Sand Mixer	:	10 MT / Hr. - 1 No.
Sand Reclamation Unit	:	10 MT / Hr. - 1 No.
Sand Reclamation Unit	:	5 MT / Hr. - 1 No.
Sand System	:	Furan

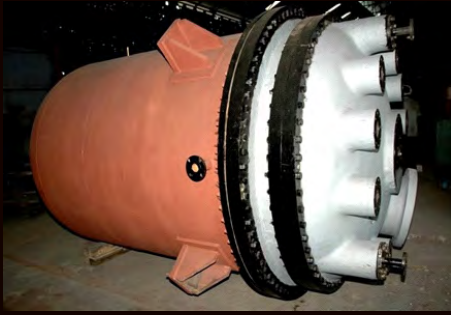
Pattern Making

Patterns of Wood, Expanded Polystyrene (thermocole) & Metal.
Both by Manual Process and CNC Machining process available.
Sufficient space for storage and preservation of patterns.

Machining

Horizontal Boring Machines – 15 Nos.	:	
Maximum Ram Size	:	550mm x 550mm
Maximum size	:	16m x 4.5m x 2.4m (X x Y x Z)
Plano Millers - 3 Nos.	:	
Table Size	:	6000 mm x 3000 mm
Clear Height	:	3000mm
CNC Drilling Machines – 3 Nos.	:	
Maximum Thickness	:	300mm
CNC Turning Lathes – 4 Nos.	:	
Swing Over Bed	:	Max. 950 mm
Admit Between Center	:	Max. 5000 mm
CNC Milling Machines – 4 Nos.	:	
Maximum size	:	9.5m x 1m x 3m (X x Y x Z)
Vertical Boring Machines – 2 Nos.	:	
Table Dia.	:	3m x Swing 5.3m x Height of Job 2.7m
Maximum Load Capacity	:	40 MT





Chemical & Dye Stuff Casting



Machine Tool Casting



Soda Ash Casting



Sheet Forming Drum Assembly



Compressor Frame Casting



Tool & Die Casting

Other Offerings by Isgec



Process Equipment



EPC Power Plants



Boilers



Sugar Plants & Machinery



Presses



Air Pollution Control Equipment



Metal Cutting Machinery



Contract Manufacturing



ISGEC HEAVY ENGINEERING LTD.

Sales Office & Foundry
Yamunanagar - 135 001 (Haryana) India
Email: foundry@isgec.com, foundry_marketing@isgec.com

Corporate Office
A-4, Sector 24, Noida (U.P.) India

www.isgec.com