

International Quality Castings

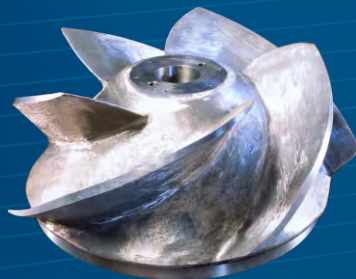
J O B B I N G F O U N D R Y

CREEP RESISTANT STEELS

STAINLESS STEELS

ALLOY & CARBON STEELS

ALLOY & NODULAR IRONS





The Isgec Corporate Office at Noida, a suburb of New Delhi, India

Ø A unit of **Isgec Heavy Engineering Ltd.**, a multi-product, multi-location public company that has been providing engineering solutions to customers around the world for the past 80 years. It ranks 309 in the ET 500 listing, and 329 in the Fortune India 500 listing.

Ø Known to customers around the world as U.P. Steels, the Unit has now adopted the common brand name - Isgec, in line with the rest of the product lines of the company.

Ø Foundry approved by Lloyd's Register of Shipping, London

Ø ISO-9001:2008 Certification by Lloyd's Register, Asia

Ø Qualified Creep Rupture Test for 10,000 hrs.

Ø Other business units of the Company are:

Process Equipment, EPC Power Plants, Boilers, Sugar Plants & Machinery, Presses, Contract Manufacturing, and Trading.

A Few Prestigious Customers

ALSTOM

SIEMENS

GE ENERGY

SKODA

BHEL

ANDRITZ

VOITH HYDRO

L&T MHI

IMPSA

TOSHIBA

TYCO

MAN TURBO

ANSALDO

FINCANTIERI

FRANCO TOSI

DRESSER RAND

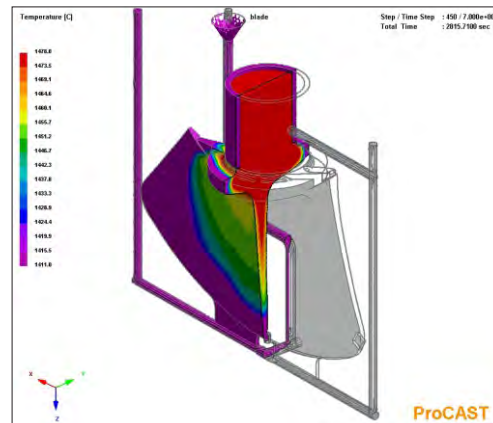
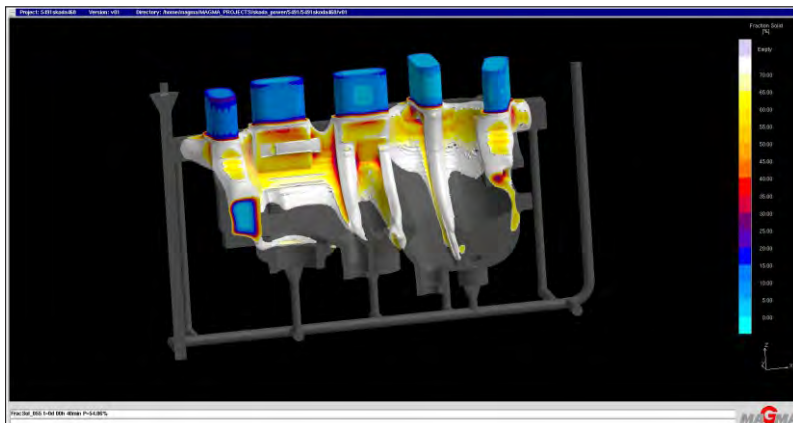
ABB

GLOBAL REACH CUSTOMERS AROUND THE WORLD



Technology

- Flow & Thermal Analysis / Simulation using MAGMASOFT & PROCAST



Quality

- 39 Channel Spectrometer with Nitrogen Analysis
- Gas Analyser for Oxygen, Hydrogen & Nitrogen
- Ultrasonic Testing
- Magnetic Particle Test
- Dye Penetrant Test
- Radiography up to 200mm (Iridium & Cobalt source)
- Theodolite System - for Non-Contact Profile Measurements
- Qualified NDT Personnel (Level II & III)

Metallurgical Microscope



Ultrasonic testing area



Gas Analyser



Radiography (Cobalt Source) facility



Spectrometer



Profile measuring using Theodolite System



STEAM TURBINE CASTINGS

Capacity : 50 MT
(single piece supplied weight)

- Major Customers** :
- Siemens
 - BHEL
 - GE Energy
 - Skoda
 - Toshiba
 - Ansaldo
 - L&T MHI
 - Fincantieri
 - Franco Tosi
 - Alstom

Creep Rupture
Test Certificates



IV & CV Casing



Inner Casing



Outer Casing



660 MW Outer Casing



Creep Castings under inspection

HYDRO TURBINE CASTINGS



CASTINGS

Capacity : 40 MT

(single piece supplied weight)

- Major Customers** :
- Alstom
 - BHEL
 - Andritz
 - GE Hydro
 - Voith Hydro
 - Franco Tosi
 - IMPSA
 - Aerodyn

Runner Crown



Runner Band



Wicket Gate



Francis Runner Blade



Pelton Runner



Francis Runner



Guide Vane Carrier



Francis Runner



VALVE CASTINGS

Capacity : 60 MT
(single piece supplied weight)



Control Valve



Valve Body

PUMP CASTINGS

Capacity : 60 MT
(single piece supplied weight)



Pump Casing



Impeller



Pump Casing

GENERAL CASTINGS

Capacity : 60 MT
(single piece supplied weight)



Chock



Grinding Table



Front Dipper Wall

Capabilities

Capacity	800 MT/Month
Weight Range	up to 60 MT single piece
Maximum Size	8 M x 8 M x 4 M
Area under Crane	40000 Sq.M
EOT Cranes	25 Nos.
Max. Lifting Capacity	160 MT

Melting & Refining

Arc Furnace	11 MT
Induction Furnace	2 x 11 MT
AOD Furnace	16 MT
LRF Furnace	2 x 40 MT & 25 MT
VD/VOD Furnace	40 MT

Moulding

Continuous Sand Mixer	30 MT / Hr. - 2 No.
Continuous Sand Mixer	5 MT / Hr. - 1 No.
Sand Reclamation Unit	8 MT / Hr. - 2 Nos.
Sand Systems - Alphasert, Phenolic & Sodium Silicate	

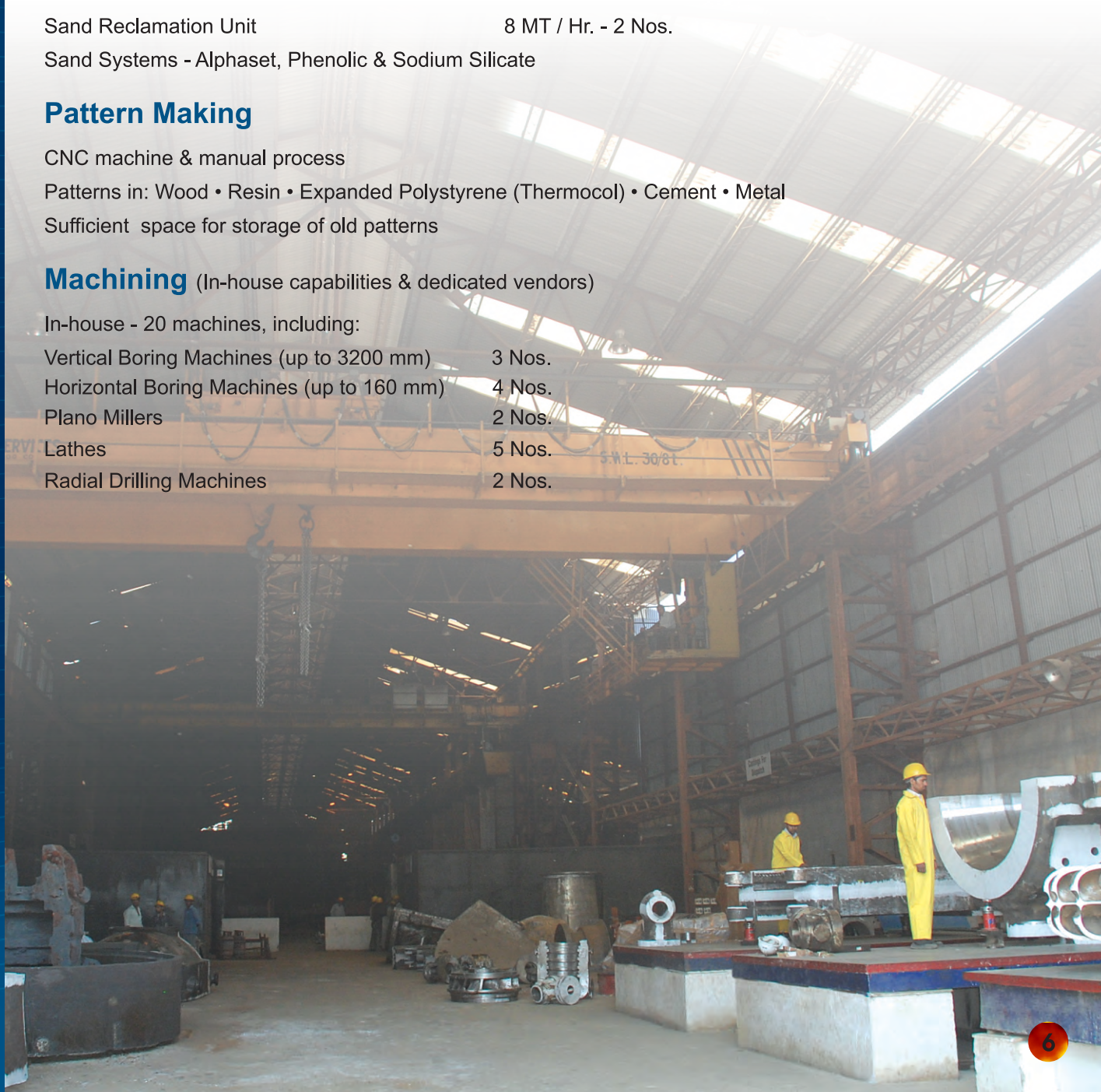
Pattern Making

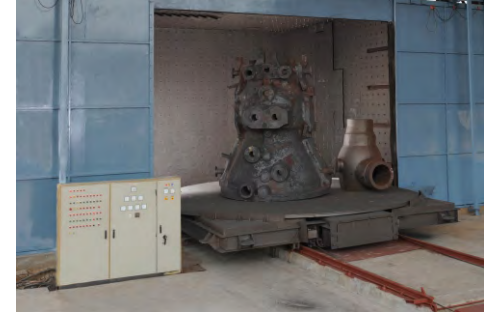
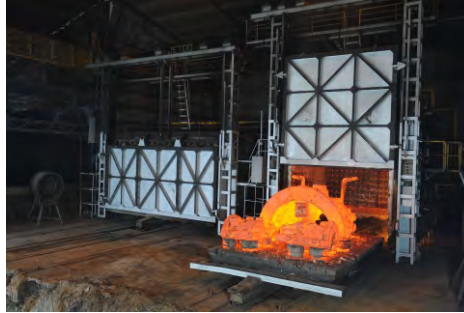
CNC machine & manual process
 Patterns in: Wood • Resin • Expanded Polystyrene (Thermocol) • Cement • Metal
 Sufficient space for storage of old patterns

Machining (In-house capabilities & dedicated vendors)

In-house - 20 machines, including:

Vertical Boring Machines (up to 3200 mm)	3 Nos.
Horizontal Boring Machines (up to 160 mm)	4 Nos.
Plano Millers	2 Nos.
Lathes	5 Nos.
Radial Drilling Machines	2 Nos.





Other offerings by
**ISGEC HEAVY
 ENGINEERING LTD.**

- Process Equipment
- EPC Power Plants
- Boilers
- Sugar Plants & Machinery
- Presses
- Contract Manufacturing
- Trading



Sales Office & Plant

U.P. Steels, Nara, Meerut Road, Muzaffarnagar - 251 203 (U.P.) India

Mobile: +91-99977 77791, +91-99972 99950 Fax: +91-1396-25 23 24

E-mail: marketing@upsteels.com, info@upsteels.com

Corporate Office

A-4, Sector 24, Noida (U.P.) India

Branch Offices

USA: California • Germany: Dusseldorf • India: Mumbai, Chennai, Pune, Kolkata